

Heavy Industrial CGEHQ SERIES Urethane on Cast Iron Centre

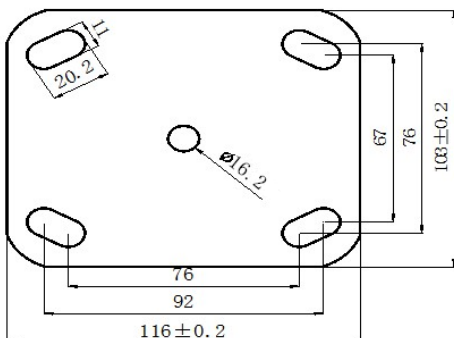
100mm, 125mm, 150mm, 200mm



Capacity: 280 – 450KG per castor

- Double Ball Bearing Centres
- Urethane on Cast Iron Centre
- Robust Metal Total Brake
- Applications for all industries : Transport, Food & Engineering Industries, Warehousing and many other applications

TYPE	CODE	WHEEL DIAMETER (MM)	TYRE WIDTH	WHEEL TYPE	BEARING TYPE	SWIVEL RADIUS MM	CAPACITY	HEIGHT (MM)
SWIVEL	CGEHPUQ100S	100	50					
SWIVEL / BRAKE	CGEHPUQ100STB	100	50		BALL	81	280	144
FIXED	CGEHPUQ100F	100	50		BALL	129	280	144
SWIVEL	CGEHPUQ125S	125	50		BALL	81	280	144
SWIVEL / BRAKE	CGEHPUQ125STB	125	50		BALL	96	350	165
FIXED	CGEHPUQ125F	125	50		BALL	129	350	165
SWIVEL	CGEHPUQ150S	150	50		BALL	96	350	165
SWIVEL / BRAKE	CGEHPUQ150STB	150	50		BALL	115	400	191
FIXED	CGEHPUQ150F	150	50		BALL	141	400	191
SWIVEL	CGEHPUQ200S	200	50		BALL	115	400	191
SWIVEL / BRAKE	CGEHPUQ200STB	200	50		BALL	150	450	242
FIXED	CGEHPUQ200F	200	50		BALL	150	450	242



- Spare weldable plates available (CG Platena)