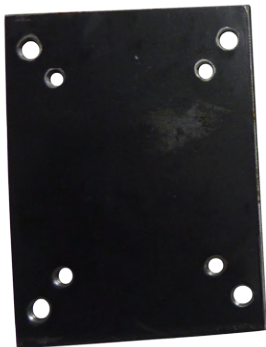


# CG CASTOR FIXING PLATE



CGCASTORPLATE



SPPLATENARAW



SPPLATEISORAW

- Weldable steel plates (Raw Material)
- Can be powder coated after fitted to trolley or machine
- Advantage of using the weldable plates is you can bolt and unbolt castors if need be.

CODE	OVERALL LENGTH	WIDTH	SLOTTED HOLES DIAMETER	ROUND HOLE DIAMETER	HOLE SIZE
CGCASTORPLATE	130	100	N/A	80mm x 60 105mm x 80mm	5/16" (Smaller plate) 3/8" (Larger plate)
SPPLATENARAW	114mm	100mm	76/67mm X 92/76mm	N/A	11mm
SPPLATEISORAW	130mm	100mm	N/A	105mm x 80mm	11mm



# CG CASTOR FITTINGS

- These fittings are used with the – GN PINTLE (Grip Neck pintle)

CODE	SHAPE	MATERIAL	ADAPTOR SIZE	TUBE SIZE I.D	O.D	WALL
S11	ROUND	NYLON	11mm	10.9mm	12.7	0.9
S14	ROUND	NYLON	14mm	13.6mm	16.0	1.2
S17	ROUND	NYLON	17mm	16.6mm	19.0	1.2
S17SQ	SQUARE	NYLON	17mm	16.6mm	19.0SQ	1.2
S19SQ	SQUARE	NYLON	19mm	19.0mm	22.2	1.6
S23	ROUND	NYLON	23mm	23.0mm	25.4	1.2
S23SQ	SQUARE	NYLON	23mm	23.0mm	25.4SQ	1.6