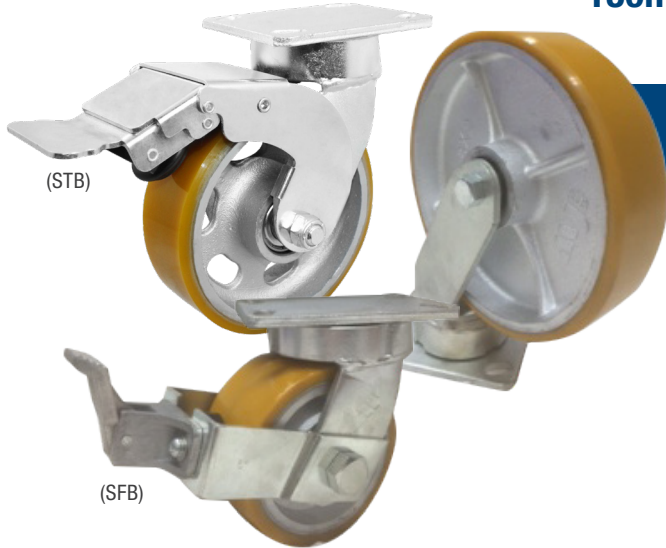


Heavy Industrial CGX SERIES Urethane on Cast Iron Centre

150mm, 200mm, 250mm, 300mm



Capacity: 600 - 2800KG per castor

- Double Ball Bearing Raceways
- Urethane on Cast Iron Centre, 85-95 Shore A
- Precision Bearing centre wheels, Grease Nipple in Head Raceway
- Application for all industries : Transport, Food & Engineering Industries, Warehousing and many other applications


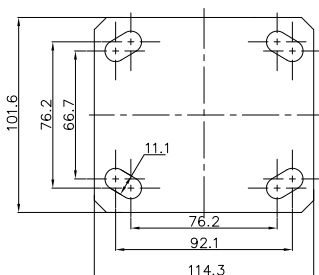
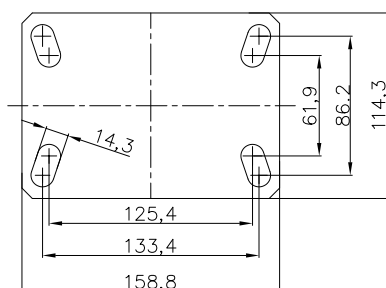
TYPE	CODE	WHEEL DIAMETER (MM)	TYRE WIDTH	WHEEL TYPE	BEARING TYPE	PLATE SIZE	SWIVEL RADIUS MM	CAPACITY KG	HEIGHT (MM)
SWIVEL	CGXPUQ150S	150	50	 Urethane	BALL	PLATE A	115.9	600kg	191
SWIVEL / TOTAL BRAKE	CGXPUQ150STB	150	50		BALL	PLATE A	172.9	600kg	191
FIXED	CGXPUQ150F	150	50		BALL	PLATE A	115.9	600kg	191
SWIVEL	CGXPUQ150075S	150	75		BALL	PLATE B	111	1000kg	190
SWIVEL / FACE BRAKE	CGXPUQ150075SFB	150	75		BALL	PLATE B	169	1000kg	190
FIXED	CGXPUQ150075F	150	75		BALL	PLATE B	111	1000kg	190
SWIVEL	CGXPUQ200S	200	50		BALL	PLATE A	158.8	800kg	257
SWIVEL / TOTAL BRAKE	CGXPUQ200STB	200	50		BALL	PLATE A	217.9	800kg	257
FIXED	CGXPUQ200F	200	50		BALL	PLATE A	158.8	800kg	257
SWIVEL	CGXPUQ20075S	200	75		BALL	PLATE B	154	1800kg	257
SWIVEL / FACE BRAKE	CGXPUQ20075SFB	200	75		BALL	PLATE B	212	1800kg	257
FIXED	CGXPUQ20075F	200	75		BALL	PLATE B	154	1800kg	257
SWIVEL	CGXPUQ250S	250	75		BALL	PLATE C	213	2500kg	317
SWIVEL / FACE BRAKE	CGXPUQ250SFB	250	75		BALL	PLATE C	271	2500kg	317
FIXED	CGXPUQ250F	250	75		BALL	PLATE C	213	2500kg	317
SWIVEL	CGXPUQ300S	300	75		BALL	PLATE C	262	2800kg	393
SWIVEL / FACE BRAKE	CGXPUQ300SFB	300	75		BALL	PLATE C	320	2800kg	393
FIXED	CGXPUQ300F	300	75		BALL	PLATE C	262	2800kg	393

PLATE A

PLATE B

PLATE C
