

JOCKEY WHEELS - Parts



JWBTR16

Thrust race bearing,
For all standard models

ID	16mm
OD	30.5mm
Unit weight	0.04kg



CLAMPHANDLE

Clamp Handle
to suit standard clamp complete
with retaining washer

Dimensions	0.18kg
------------	--------



JWBTR20

Thrust Race Bearing,
For all HD models

ID	17mm
OD	35mm
Unit weight	0.05kg



LDSB-HANDLE

Handle set
to suit LDSB1 swivel bracket
complete with spring/washers/pins

Unit Weight	0.33kg
-------------	--------



JWHANDLE-GS

Handle Grub Screw - Plastic Knob
For all standard Jockey Wheels pre 01

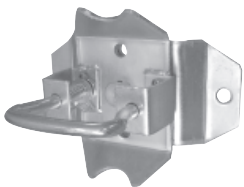
Unit Weight	0.25kg
-------------	--------



JWHANDLE-RP

Handle Roll Pin - Plastic Knob
For all standard jockey wheels

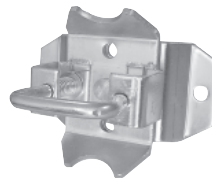
Unit Weight	0.25kg
-------------	--------



LDSB1

Pin Locking Swivel Bracket
Bolt-on/Weld-on
To suit standard and medium range of
jockey wheels and stands

Suit Outer Tube	standard 48mm OD
Unit Weight	2.2kg
Dimensions	210mm (w) x 100mm (h)
Hole Size	13.5mm
Hole Centres	175mm
Plate Thickness	6mm



HDSB1

Heavy Duty Pin Locking Swivel
Bracket Bolt-on/Weld-on
To suit heavy duty range of jockey
wheel and stands

Suit Outer Tube	Heavy duty 60mm OD
Unit Weight	3.7kg
Dimensions	220mm (w) x 110mm (h)
Hole Size	16.5mm
Hole Centres	180mm
Plate Thickness	8mm